

GLASS/ENAMEL PROTECTED STEEL CALORIFIERS

VERSOTHERM-STI/GL SERIES

STEEL LINED WATER HEATER

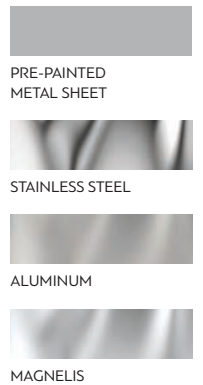
For Solar & Heat Pump



AVAILABLE EXTERNAL SHELL COLOURS (FOR SOFT PVC)



AVAILABLE EXTERNAL SHELL MATERIALS



AVAILABLE INNER TANK & COIL MATERIALS



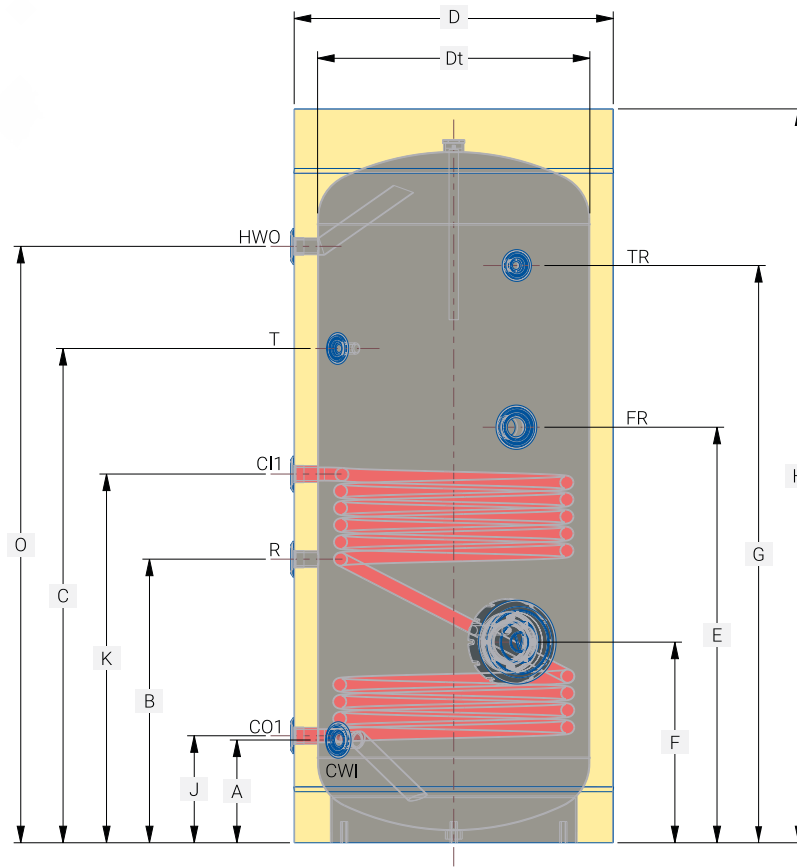
TECHNICAL SPECIFICATIONS

Material	Steel Sheet
Welding	Automatic Metal Welding
Protection Coating	High Quality Glass – Enamel and protection Anode
Maximum Working Pressure	10 bar
Water Test Pressure	15 bar
Maximum Operating Temperature	95°C
Insulation	Polyurethane foam of 55 mm thickness. Density 52 kg/m ³
Coil	Steel tube
Maximum Coil Test Pressure	25 bar
Electric Resistance	Upon Request
External Cover	Soft pvc, color of your choice or Metal Sheet

CERTIFICATIONS



For all the tanks, enameled and combination ones, it is necessary to install an expansion vessel, a security valve and a protection anode for the hot domestic water.



TYPE		STI - SPIRA							
PART NUMBER		STI - SPIRA -150		STI - SPIRA - 200		STI - SPIRA - 300		STI - SPIRA - 500	
-	Coil S1 capacity (Liter)	4,66		5,98		9,91		12,56	
K	Coil S1 inlet (C11)	1"	547	1"	669	1"	818	1"	866
J	Coil S1 outlet (CO1)		217		209		218		251
-	Coil S1 surface (m ²)	0,78		0,98		1,55		1,97	
-	Coil S1 Efficiency (kw)	19,24		24,17		38,23		48,59	
B	Recirculation (R)	3/4"	437	3/4"	519	3/4"	618	1"	666
A	Cold Water Inlet (CWI)	1"	217	1"	209	1"	218	1"	241
O	Hot Water Outlet (HWO)		849		1140		1398		1401
C	Thermostat (T)	1/2"	635	1/2"	1039	1/2"	1148	1/2"	1161
G	Thermometer (TR)		839		1135		1318		1356
E	Free outlet (FR)	1 1/2"	628	1 1/2"	754	1 1/2"	931	1 1/2"	976
F	Boiler cleaning hole	Ø140	385	Ø140	402	Ø140	453	Ø140	471
-	Anode	22x200	22x200	22x400	22x200	32x500	22x400	32x500	32x500
H	Total height	1120		1400		1620		1700	
D	External Diameter	560		600		630		750	
-	Tilt height (mm)	1217		1475		1728		1838	
-	Weight (kg)	61		80		103		139	

STEEL LINED WATER HEATER

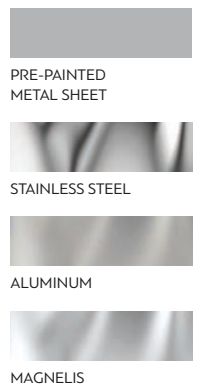
For Solar & Heat Pump



AVAILABLE EXTERNAL SHELL COLOURS (FOR SOFT PVC)



AVAILABLE EXTERNAL SHELL MATERIALS



AVAILABLE INNER TANK & COIL MATERIALS



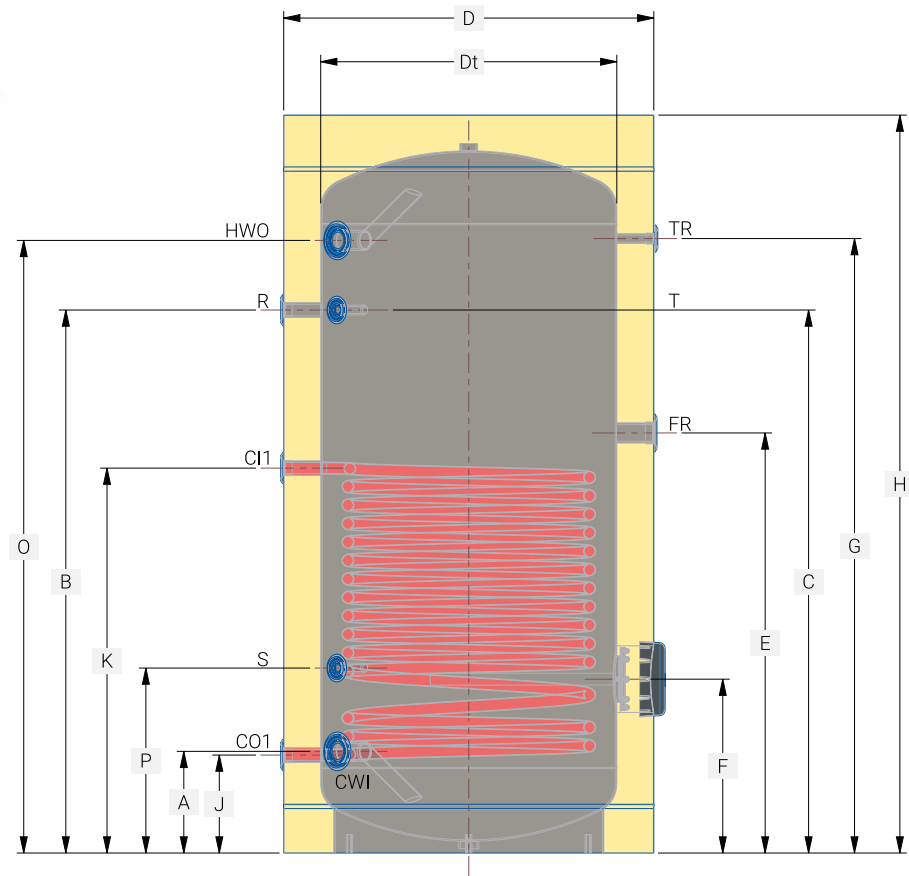
TECHNICAL SPECIFICATIONS

Material	Steel Sheet
Welding	Automatic Metal Welding
Protection Coating	High Quality Glass – Enamel and protection Anode
Maximum Working Pressure	10 bar
Water Test Pressure	15 bar
Maximum Operating Temperature	95°C
Insulation	Removable Soft Polyurethane foam of 50mm or 100 mm thickness.
Coil	Density 20 kg/m ³ Steel tube
Maximum Coil Test Pressure	25 bar
Electric Resistance	Upon Request
External Cover	Soft pvc, color of your choice or Metal Sheet

CERTIFICATIONS



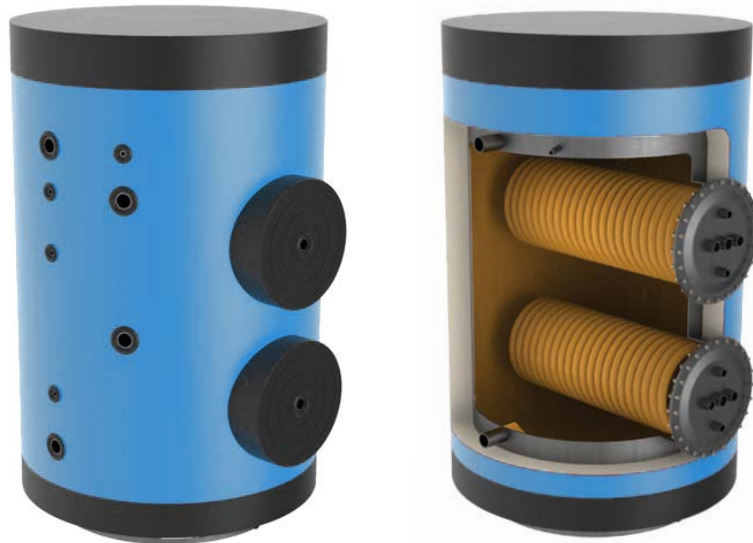
For all the tanks, enameled and combination ones, it is necessary to install an expansion vessel, a security valve and a protection anode for the hot domestic water.



TYPE		STI - SPIRA			
PART NUMBER		STI - SPIRA - 1000		STI - SPIRA - 1250	
-	Coil S1 capacity (Liter)	15,2		19,1	
K	Coil S1 inlet (CI1)	1"	942	1"	1040
J	Coil S1 outlet (CO1)		292		265
-	Coil S1 surface (m ²)	2,38		3	
-	Coil S1 Efficiency (kw)	58,70		73,99	
B	Recirculation (R)	1"	1272	1"	1467
A	Cold Water Inlet (CWI)	1 1/2"	292	1 1/2"	275
O	Hot Water Outlet (HWO)		1422		1655
C	Thermostat (T)	1272		1467	
G	Thermometer (TR)	1/2"	1397	1/2"	1660
P	Sensor (S)		492		500
E	Free outlet (FR)	1 1/2"	1027	1 1/2"	1135
F	Boiler cleaning hole	Ø170	502	Ø170	470
-	Anode	32x500	32x500	32x500	32x500
H	Total height	1780		2020	
D	External Diameter	1000		1000	
-	Tilt height (mm)	2040		2230	
-	Weight (kg)	226		246	

STEEL STORAGE CALORIFIERS

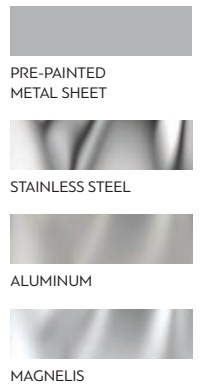
Glass or Epoxy Lined Steel Storage Calorifiers For Central Heating Systems



AVAILABLE EXTERNAL SHELL COLOURS (FOR SOFT PVC)



AVAILABLE EXTERNAL SHELL MATERIALS



AVAILABLE INNER TANK & COIL MATERIALS



CERTIFICATIONS



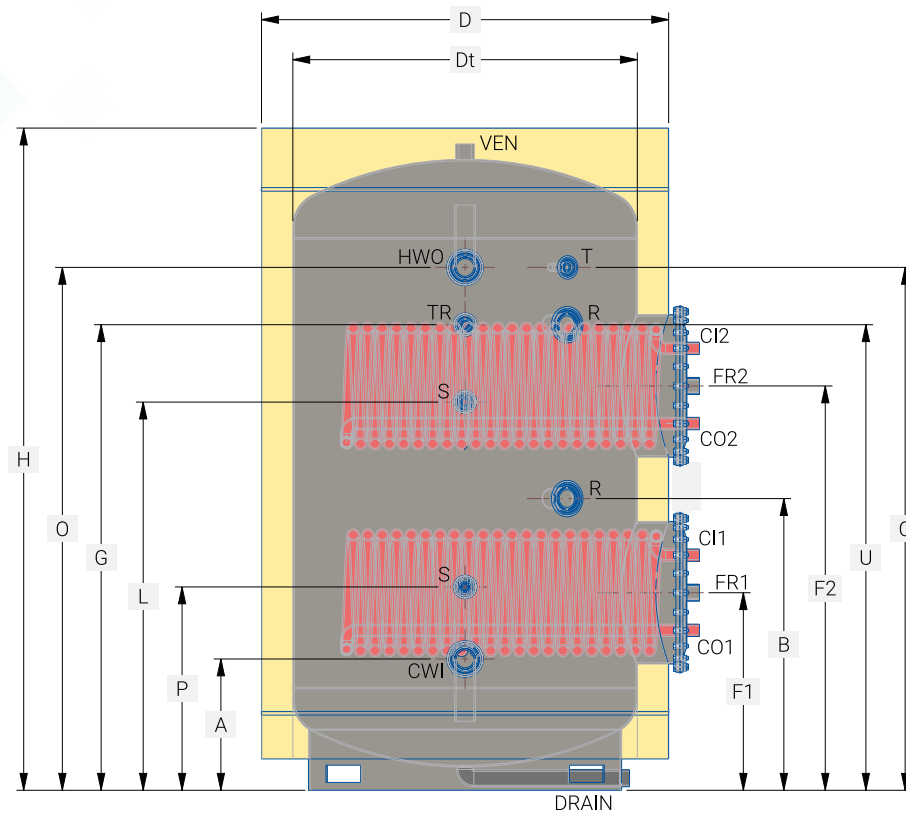
Can be used as :

- STI-REX - With removable heat exchanger coil for boiler , Heat pump or solar system
- STI-EC - Without coil , But with electric immersion heater
- STD - Butter tank , Without any heater

TECHNICAL SPECIFICATIONS

Material	Steel Sheet
Welding	Automatic Metal Welding
Protection Coating	High Quality Glass for 500lt, Epoxy Resin for 750 & 1000lt,
Maximum Working Pressure	Enamel and protection Anode 10 bar
Maximum Operating Temperature	85°C
Coil	Steel tube
Maximum Coil Test Pressure	25 bar
Insulation	Removable Soft Polyurethane foam of 50 mm & 100 mm thickness
Electric Resistance	Upon Request
Flange Diameter (Anode-Cleaning Flange)	Ø508 mm
External Cover	Soft pvc, color of your choice or Metal Sheet

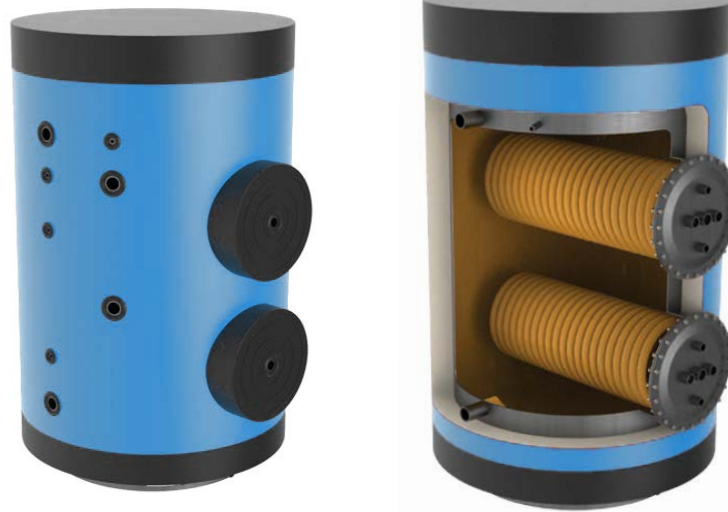
For all the tanks, enameled and combination ones, it is necessary to install an expansion vessel, a security valve and a protection anode for the hot domestic water.



TYPE		STI - REX/STI - EC/STD			
PART NUMBER		STD - 600		STD - 1000	
-	Coil 2,2m ² capacity (Liter) (Optional)	13,22		-	
-	Coil 3,2m ² capacity (Liter) (Optional)	-		19,83	
-	Coil 2,2m ² Efficiency (kw)	54,26		-	
-	Coil 3,2m ² Efficiency (kw)	-		78,92	
-	Number of Flanges / Hole Diameter (mm) / External Diameter (mm)	2 / Ø420 / Ø508		2 / Ø420 / Ø508	
B	Recirculation (R)	1"	541	1"	572
U	Recirculation (R)		1191		1222
A	Cold Water Inlet (CWI)	1 1/2"	261	1 1/2"	292
O	Hot Water Outlet (HWO)		1392		1422
C	Thermostat (T)	1/2"	1392	1/2"	1422
G	Thermometer (TR)		1191		1222
P	Sensor (S)	1/2"	491	1/2"	522
L	Sensor (S)		941		972
F1	Free outlet (FR)	1 1/2"	486	1 1/2"	517
F2	Free outlet (FR)		1166		1197
H	Total height	1750		1780	
D	External Diameter			1000	
-	Tilt height (mm)	1917		2040	
-	Coil 2,2m ² Weight (kg)	47		-	
-	Coil 3,2m ² Weight (kg)	-		60	
-	Total Weight of the Ready Product without Coil (kg)	139		209	

STEEL STORAGE CALORIFIERS

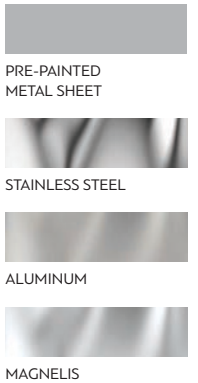
Glass or Epoxy Lined Steel Storage Calorifiers For Central Heating Systems



AVAILABLE EXTERNAL SHELL COLOURS (FOR SOFT PVC)



AVAILABLE EXTERNAL SHELL MATERIALS



AVAILABLE INNER TANK & COIL MATERIALS



CERTIFICATIONS



Can be used as :

STI-REX - With removable heat exchanger coil for boiler , Heat pump or solar system

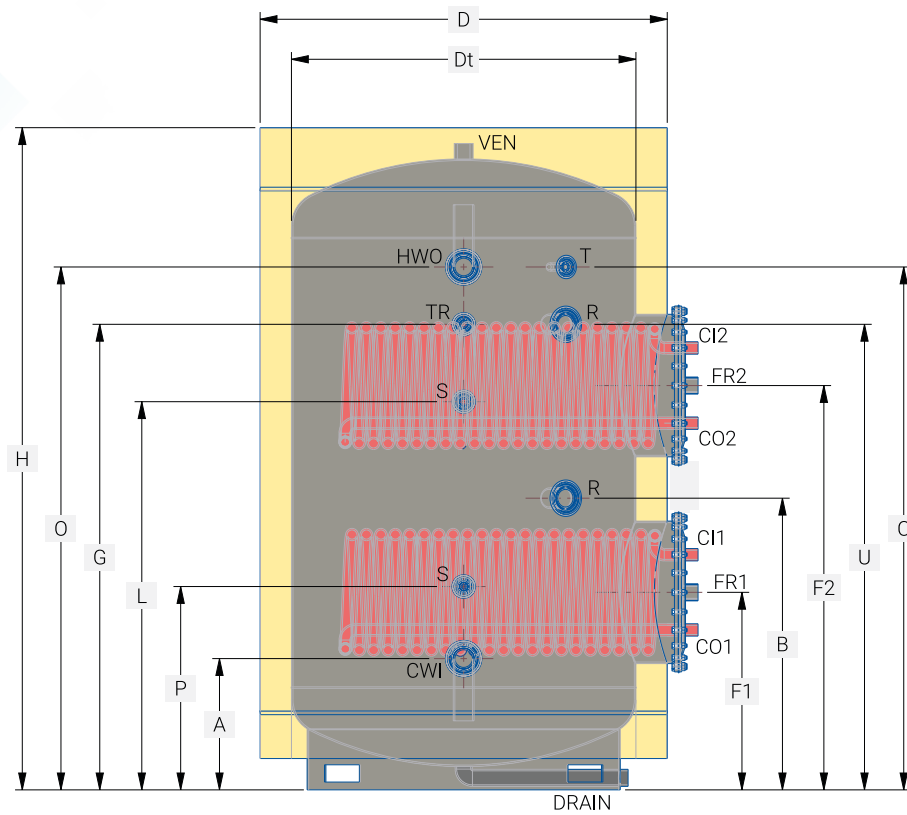
STI-EC - Without coil , But with electric immersion heater

STD- Butter tank , Without any heater

TECHNICAL SPECIFICATIONS

Material	Steel Sheet
Welding	Automatic Metal Welding
Protection Coating	Epoxy resin, Enamel and protection Anode
Maximum Working Pressure	10 bar
Maximum Operating Temperature	85°C
Coil	Steel tube
Maximum Coil Test Pressure	25 bar
Insulation	Removable Soft polyurethane foam of 50mm or 100 mm thickness
Electric Resistance	upon Request
Flange Diameter (Anode-Cleaning Flange)	Ø508 mm
External Cover	Soft pvc, color of your choice or Metal Sheet

For all the tanks, enameled and combination ones, it is necessary to install an expansion vessel, a security valve and a protection anode for the hot domestic water.



TYPE		STI - REX/STI - EC/STD					
PART NUMBER		STD - 1250		STD - 1500		STD - 2000	
-	Coil 3,2m ² capacity (Liter) (Optional)	19,83		19,83		19,83	
-	Coil 5,4m ² capacity (Liter) (Optional)	-		33,05		33,05	
-	Coil 3,2m ² Efficiency (kw)	78,92					
-	Coil 5,4m ² Efficiency (kw)	133,18					
-	Number of Flanges / Hole Diameter (mm) / External Diameter (mm)	2 / Ø420 / Ø508		2 / Ø420 / Ø508		2 / Ø420 / Ø508	
B	Recirculation (R)	1"	787	2"	902	2"	937
U	Recirculation (R)		1387		1457		1478
A	Cold Water Inlet (CWI)	1 1/2"	287	2"	390	2"	425
O	Hot Water Outlet (HWO)		1637		1640		1631
C	Thermostat (T)	1/2"	1637	1/2"	1640	1/2"	1661
G	Thermometer (TR)		1512		1457		1478
P	Sensor (S)	1/2"	537	1/2"	620	1/2"	625
L	Sensor (S)		1137		1210		1245
F1	Free outlet (FR)	1 1/2"	513	1 1/2"	601	1 1/2"	623
F2	Free outlet (FR)		1173		1261		1283
H	Total height	1970		2100		2120	
D	External Diameter	1000		1300		1400	
-	Tilt height (mm)	2230		2457		2517	
-	Coil 3,2m ² Weight (kg)	60		68		68	
-	Coil 5,4m ² Weight (kg)	-		82		82	
-	Total Weight of the Ready Product Without Coil (kg)	229		420		490	

STEEL STORAGE CALORIFIERS

Glass or Epoxy Lined Steel Storage Calorifiers For Central Heating Systems



Can be used as :

STI-REX - With removable heat exchanger coil for boiler , Heat pump or solar system

STI-EC - Without coil , But with electric immersion heater

STD - Butter tank , Without any heater

TECHNICAL SPECIFICATIONS

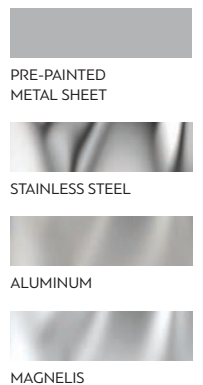
Material	Steel Sheet
Welding	Automatic Metal Welding
Protection Coating	Epoxy resin, Enamel and protection Anode
Maximum Working Pressure	10 bar
Maximum Operating Temperature	85°C
Coil	Steel tube
Maximum Coil Test Pressure	25 bar
Insulation	Removable Soft Polyurethane foam of 50mm or 100 mm thickness
Electric Resistance	Upon Request
Flange Diameter (Anode-Cleaning Flange)	Ø620 mm
External Cover	Soft pvc, color of your choice or Metal Sheet



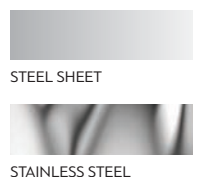
AVAILABLE EXTERNAL SHELL COLOURS (FOR SOFT PVC)



AVAILABLE EXTERNAL SHELL MATERIALS



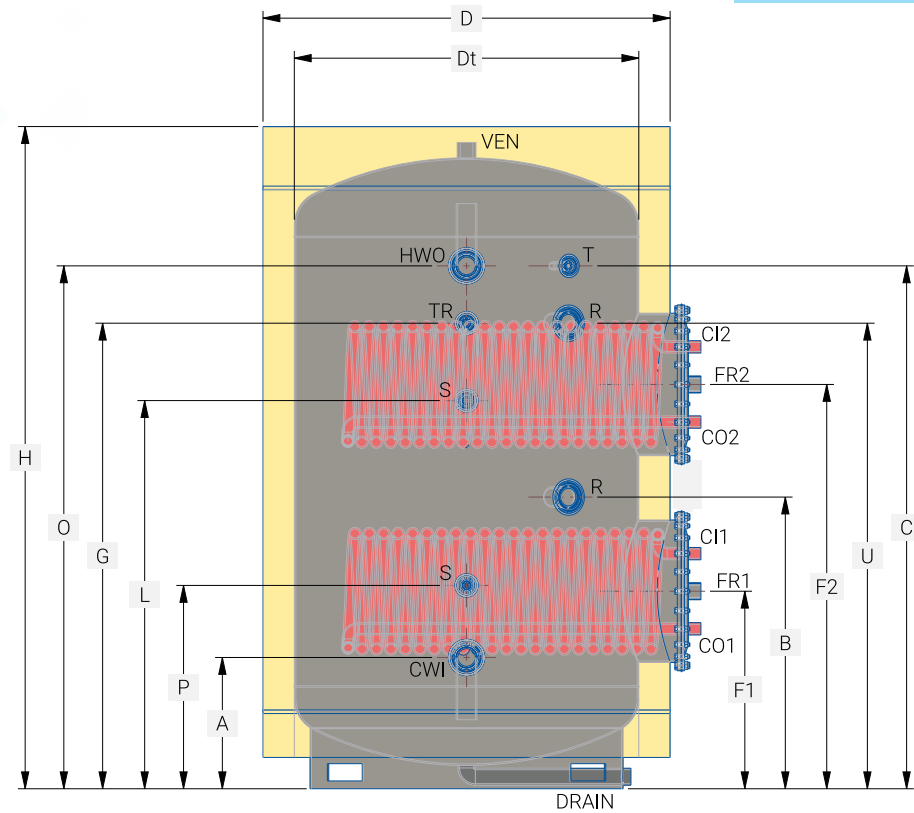
AVAILABLE INNER TANK & COIL MATERIALS



CERTIFICATIONS



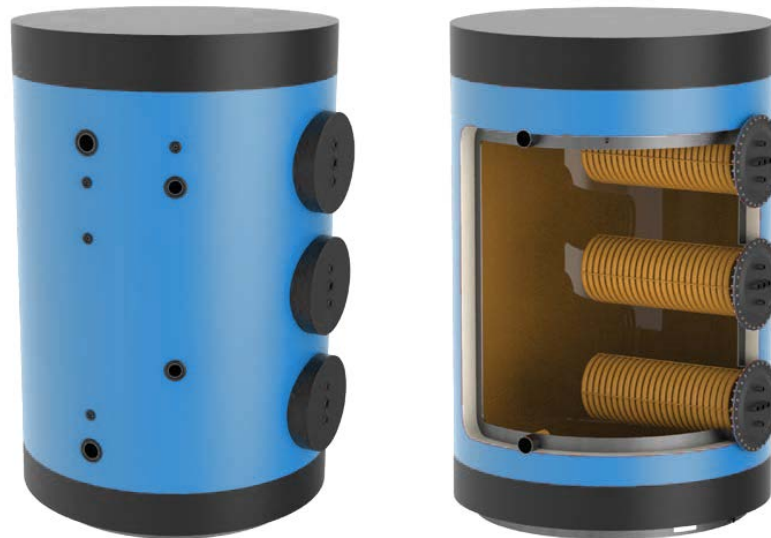
For all the tanks, enameled and combination ones, it is necessary to install an expansion vessel, a security valve and a protection anode for the hot domestic water.



TYPE		STI - REX/STI - EC/STD					
PART NUMBER		STD - 3000		STD - 4000		STD - 5000	
-	Coil 3,2m ² capacity (Liter) (Optional)	34,02		-		-	
-	Coil 5,4m ² capacity (Liter) (Optional)	56,7		56,7		56,7	
-	Coil 3,2m ² Efficiency (kw)	78,92		-			
-	Coil 5,4m ² Efficiency (kw)			133,18			
-	Number of Flanges / Hole Diameter (mm) / External Diameter (mm)	2 / Ø508 / Ø620		2 / Ø508 / Ø620		2 / Ø508 / Ø620	
B	Recirculation (R)	3"	1084	3"	1123	3"	1077
U	Recirculation (R)		1925		1964		2077
A	Cold Water Inlet (CWI)	3"	428	3"	467	3"	517
O	Hot Water Outlet (HWO)		2115		2154		2277
C	Thermostat (T)		2115		2154		2277
G	Thermometer (TR)	1/2"	1925	1/2"	1964	1/2"	2077
P	Sensor (S)		627		667		717
L	Sensor (S)	1/2"	1564	1/2"	1603	1/2"	1497
F1	Free outlet (FR)		653		692		777
F2	Free outlet (FR)	1 1/2"	1563	1 1/2"	1603	1 1/2"	1607
H	Total height	2650		2700		2850	
D	External Diameter	1500		1700		1800	
-	Tilt height (mm)	3002		3169		3360	
-	Coil 3,2m ² Weight (kg)	90		90		90	
-	Coil 5,4m ² Weight (kg)	130		130		130	
-	Total Weight of the Ready Product Without Coil (kg)	645		850		930	

STEEL STORAGE CALORIFIERS

Glass or Epoxy Lined Steel Storage Calorifiers For Central Heating Systems



Can be used as :

STI-REX - With removable heat exchanger coil for boiler , Heat pump or solar system

STI-EC - Without coil , But with electric immersion heater

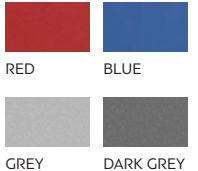
STD - Butter tank , Without any heater

TECHNICAL SPECIFICATIONS

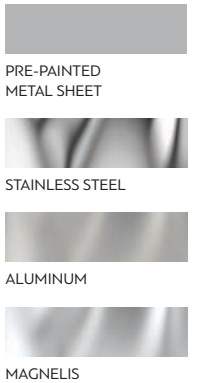
Material	Steel Sheet
Welding	Automatic Metal Welding
Protection Coating	Epoxy resin, Enamel and protection Anode
Maximum Working Pressure	10 bar
Maximum Operating Temperature	85°C
Coil	Steel tube
Maximum Coil Test Pressure	25 bar
Insulation	Removable Soft Polyurethane foam of 50mm or 100 mm thickness
Electric Resistance	Upon Request
Flange Diameter (Anode-Cleaning Flange)	Ø620 mm
External Cover	Soft pvc, color of your choice or Metal Sheet



AVAILABLE EXTERNAL SHELL COLOURS (FOR SOFT PVC)



AVAILABLE EXTERNAL SHELL MATERIALS



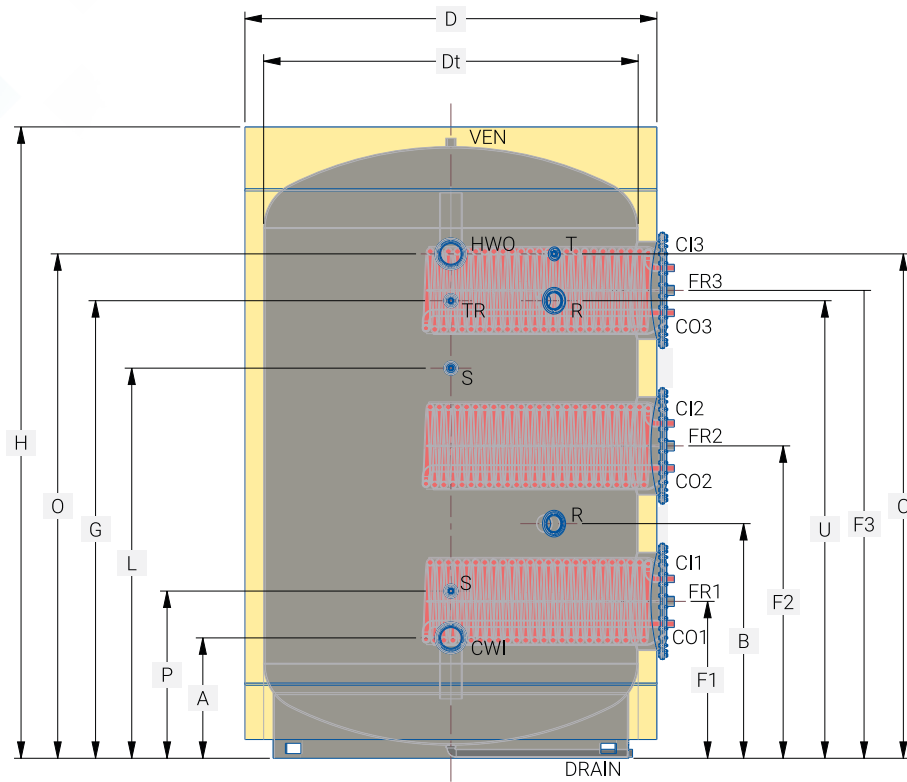
AVAILABLE INNER TANK & COIL MATERIALS



CERTIFICATIONS



For all the tanks, enameled and combination ones, it is necessary to install an expansion vessel, a security valve and a protection anode for the hot domestic water.



TYPE		STI - REX/STI - EC/STD			
PART NUMBER		STD - 7000		STD - 9000	
-	Coil 7,8m ² capacity (Liter) (Optional)	79,38		79,38	
-	Coil Efficiency (kw)	192,37			
-	Number of Flanges / Hole Diameter (mm) / External Diameter (mm)	3 / Ø508 / Ø620		3 / Ø508 / Ø620	
B	Recirculation (R)	3"	1189	3"	1233
U	Recirculation (R)		2379		2423
A	Cold Water Inlet (CWI)	4"	579	4"	623
O	Hot Water Outlet (HWO)		2629		2673
C	Thermostat (T)	1/2"	2629	1/2"	2673
G	Thermometer (TR)		2379		2423
P	Sensor (S)	1/2"	829	1/2"	873
L	Sensor (S)		2019		2063
F1	Free outlet (FR)	1 1/2"	774	1 1/2"	818
F2	Free outlet (FR)		1604		1648
F3	Free outlet (FR)		2434		2478
H	Total height	3261		3340	
D	External Diameter	2000		2200	
-	Tilt height (mm)	3825		3999	
-	Coil 7,8m ² Weight (kg)	154		154	
-	Total Weight of the Ready Product Without Coil (kg)	1400		1800	

All dimensions are in mm



“Water Heating & Cooling Solutions”

Solar Water Heaters

Heat Pumps

Storage Calorifiers

Heat Exchangers

Hot Water Boilers

Gas Fired Calorifiers

Electric Calorifiers

Steam Boilers



www.versolgroup.com