



Commercial Swimming Pool Heat Pump Heating & Cooling





Swimming Pool Heat Pump (DC Inverter Type) ASDC - SP Series

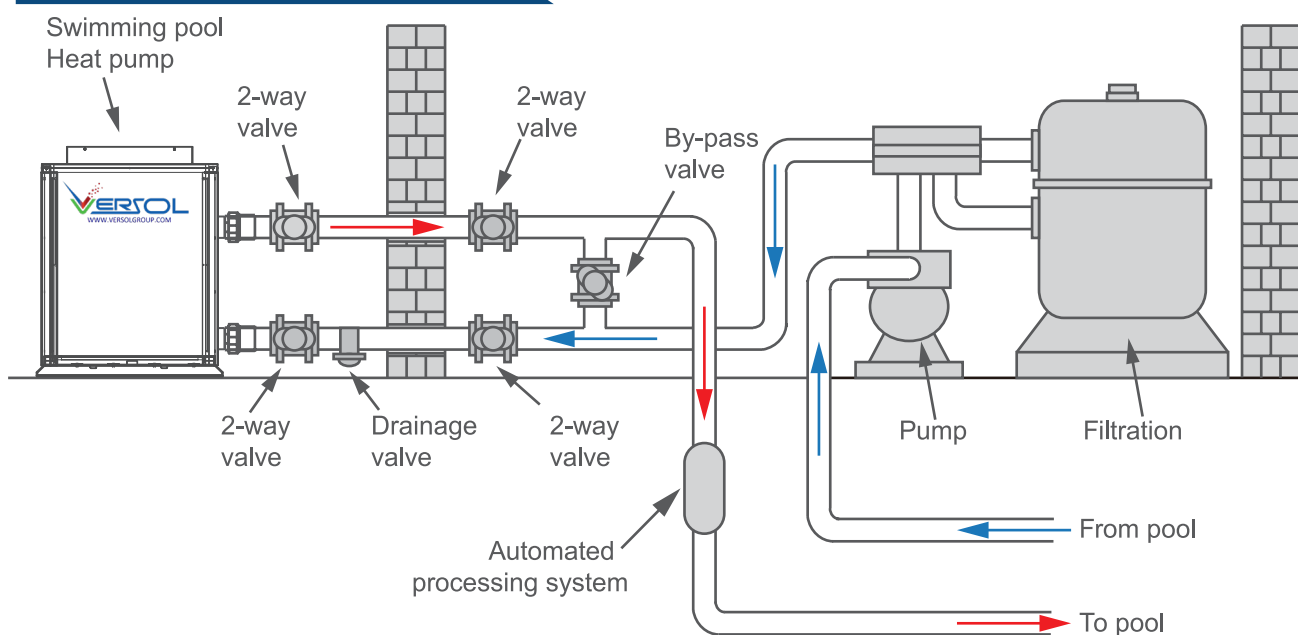


Swimming Pool Heat Pump ASDC-SP Series

		ASDC-50SP	ASDC-75SP	ASDC-100SP	ASDC-125SP	ASDC-150SP	ET-255H/SP	ET-300H/SP
Rated Heating Capacity	kW	50.0	75.0	100.0	125.0	150.0	255.0	300.0
Rated Input Power	kW	8.99	13.51	18.02	22.69	27.03	45.78	54.15
COP	/	5.56	5.55	5.55	5.51	5.55	5.57	5.54
*Heating Capacity	kW	40.0	60.0	80.0	100.0	120.0	200.0	240.0
*Input Power	kW	7.66	11.43	15.38	19.46	23.08	38.83	46.15
*COP	/	5.22	5.25	5.20	5.14	5.20	5.15	5.20
**Cooling Capacity	kW	38.00	55.00	75.00	95.00	110.00	190.00	210.00
**Input Power	kW	9.95	14.40	19.63	25.07	28.87	50.26	55.12
**EER	/	3.82	3.82	3.82	3.79	3.81	3.78	3.81
Rated Hot Water Output Temperature	°C	28						
Maximum Hot Water Output Temperature	°C	40 (Max.60 C For Option)						
Rated Cooling Water Output	°C	12						
Power Supply	3N 380V/50Hz							
Compressor	Type	DC Inverter Compressor						
Noise	DB(A)	≤65	≤68	≤70	≤70	≤70	≤78	≤80
Unit dimensions	mm	854 /854 /1830	854 /854 /1830	1850 /1000 /1950	2000 /1100 /1950	2347 /1100 /2223	2546 /1306 /2475	2546 /1306 /2475
Net Weight	KG	160	230	490	600	670	1200	1300
Testing Condition: 1. Ambient Temp.(DB/WB):24°C /19°C , Water Temp.(In/Out):26°C /28°C .								
*Ambient Temp.(DB/WB):15°C /12°C , Water Temp.(In/Out):26°C /28°C .								
** Cooling: Ambient Temp.(DB/WB): 35°C /24°C ; Water Temp.(In/Out):29°C /27°C								

* Dimensions Are Indicative Subject To Changes As Per R&D Updates

APPLICATIONS CH



HITACHI
Inspire the Next

DC INVERTER TECHNOLOGY

High quality DC Inverter compressor, approved in the market for long time, high reputation.



Titanium tube heat exchanger

Adopt professional material of PVC for the shell, which meets the requirements of environmental protection ROHS. PPR material for option for pool temperature requirement higher than 45 deg C, long lifetime for the heat exchanger; One-step forming top cover and base cover, can work under pressure of 2.5Mpa; Pure titanium seamless tube, acid and alkali resistance, good corrosion resistance, can work under refrigerant pressure of 5.3Mpa.



Gas-Liquid Separator

A large gas-liquid separator is used to prevent liquid from entering the compressor under low temperature conditions, ensuring more reliable system operation.



Wide running range, from -7°C to 52°C .



Fan motor

Large air volume, low noise blades; High torque, high efficiency motor. High efficiency and low noise.



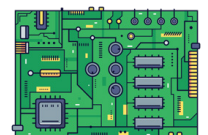
Top quality Sensata pressure sensor

Excellent precision, excellent mechanical resistance and EMC protection characteristics, meeting the most stringent application requirements under various pressure conditions



FUJIKOJI Electronic expansion valve

High precision electronic expansion valve: use electronic expansion valve for controlling, reach 500 steps adjustment, adjust super heat degrees accurately, achieve high efficiency operation system.



Electric control

The electric control adopts famous and high-quality components, and the quality is guaranteed; at the same time, the electric control box is set on the front, which is quick to install and easy to maintain.



Wifi function for option

Control your heat pump in your smartphone anywhere, anytime.



R410A refrigerant, ODP=0



**Swimming pool heat pump (On/Off Type)
ET-H/SP Series**



Professional compressor for heat pump water heater

Adopt Copeland or Panasonic top quality scroll compressor specially for heat pump water heater, with much wider operation range for different ambient temperature. Special design for high suction & exhaust temperature, and system high condensing temperature & pressure, Higher efficiency, Lower noise, Higher reliability, Longer service life.



Titanium tube heat exchanger

Adopt professional material of PVC for the shell, which meets the requirements of environmental protection ROHS. PPR material for option for pool temperature requirement higher than 45 deg C, long lifetime for the heat exchanger; One-step forming top cover and base cover, can work under pressure of 2.5Mpa; Pure titanium seamless tube, acid and alkali resistance, good corrosion resistance, can work under refrigerant pressure of 5.3Mpa.

-7°C ~ 48°C

Wide running range, from -7°C to 48°C .



Gas-liquid separator

A large gas-liquid separator is used to prevent liquid from entering the compressor under low temperature conditions, ensuring more reliable system operation.



Fan motor

Large air volume, low noise blades; High torque, high efficiency motor. High efficiency and low noise.



SANHUA

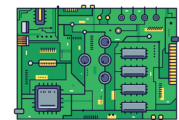
SANHUA Electronic expansion valve

High precision electronic expansion valve: use electronic expansion valve for controlling, reach 500 steps adjustment, adjust super heat degrees accurately, achieve high efficiency operation system.



Fin Heat Exchanger

The blue hydrophilic aluminum foil fin heat exchanger adopts cross-type multi-flow path design to make the heat exchange more uniform; the internal thread copper tube design has higher heat transfer efficiency; at the same time, the hydrophilic fins are not easy to form water droplets, Spreading into a uniform water film completely on the surface of fins, eliminates the generation of water bridges, which greatly improves the heat exchange capacity and heat exchange efficiency between the aluminum foil and the flowing air.



Electric control

The electric control adopts famous and high-quality components, and the quality is guaranteed; at the same time, the electric control box is set on the front, which is quick to install and easy to maintain.



Wifi function for option

Control your heat pump in your smartphone anywhere, anytime.



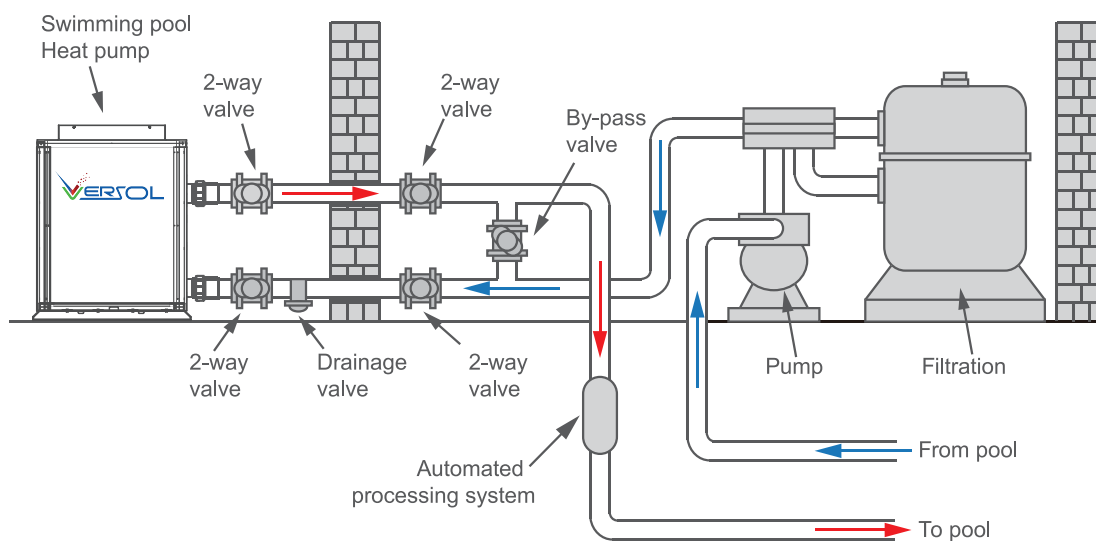
R410A refrigerant, ODP=0

Swimming Pool Heat Pump (On/Off) ET-H/SP Series

Model		ET-24H/SP	ET-47H/SP	ET-63H/SP	ET-92H/SP	ET-112H/SP	ET-143H/SP	ET-230H/SP	ET-280H/SP
Rated Heating Capacity	kW	24.1	47.5	63.3	92.8	112.6	143.3	230.0	280.0
Rated Input Power	kW	4.52	9.06	12.10	16.96	20.91	26.49	42.59	51.80
COP	/	5.33	5.24	5.23	5.47	5.38	5.41	5.43	5.40
*Heating Capacity	kW	20.1	39.8	50.4	77.2	92.5	115.7	190.0	230.0
*Input Power	kW	4.12	8.30	10.57	15.66	18.77	23.81	38.93	47.13
*COP	/	4.88	4.80	4.77	4.93	4.93	4.86	4.89	4.88
**Cooling Capacity	kW	19.42	38.83	50.49	77.67	92.23	116.50	184.47	220.25
**Input Power	kW	5.08	10.25	13.25	20.39	24.21	30.66	48.92	58.27
**EER	/	3.82	3.79	3.81	3.81	3.81	3.80	3.77	3.78
Rated Hot Water Output	°C	28							
Maximum Hot Water Output	°C	40							
Rated Cooling Water Output Temperature	°C	12							
Power Supply		3N 380V/50Hz							
Compressor	Type	Hermetic scroll type							
Noise	DB(A)	≤63	≤65	≤68	≤70	≤70	≤70	≤78	≤80
Unit Dimensions	mm	750 /750 /1060	1450 /755 /1100	854 /854 /1830	1850 /1000 /1950	1850 /1000 /1950	2347 /1100 /2223	2546 /1306 /2475	2546 /1306 /2475
Net Weight	KG	138	255	400	600	725	810	1250	1280
Testing condition: 1. Ambient Temp.(DB/WB):24°C /19°C , Water Temp.(In/Out):26°C /28°C .									
*Ambient Temp.(DB/WB):15°C /12°C , Water Temp.(In/Out):26°C /28°C .									
** Cooling: Ambient Temp.(DB/WB): 35°C /24°C ; Water Temp.(In/Out):29°C /27°C									

* Dimensions Are Indicative Subject To Changes As Per R&D Updates

APPLICATIONS SKETCH



Water Heating & Cooling Solutions

Solar Water Heaters

Heat changers

Storage Calorifiers

Heat Pump

Hot Water Boilers

Gas Fired Calorifiers

Electric Calorifiers

Steam Boilers



 Corporate offices

 Sales offices

Versol Poland | Versol Italy | Versol UK | Versol USA | Versol Middle East | Versol Australia | Versol Canada | Versol india