

**VERSOPUMP- INTEGRATED HEAT
PUMP WATER HEATERS**



VERSOPUMP- INTEGRATED HEAT PUMP WATER HEATERS

INTEGRATED AIR SOURCE HEAT PUMP WATER HEATER-AS/WH

- **Safety Integrated**

Water and electricity separated design, imported PT safety valve, negative pressure valve, electricity leakage protection, to provide multiple effective protections of safety water using.

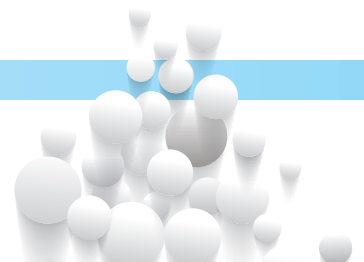
- **Energy Saving Integration**

Using special hydrophilic aluminum foil fin type heat exchanger, efficient inner thread copper tube, increasing the heat exchange area, and enhances the hydrophilic ability, reduces wind drag, makes the fin less ponding and less dirt retention, and ensures its long-term efficiency; multiple sensor measurement, intelligent defrosting to avoid mistakenly defrost, reduces heat loss when defrost and improves the unit energy efficiency.

- **Intelligent Integration**

Multiple sensors for temperature measurement, automatic heating cycle, regardless of weather conditions, could run in full day and full year, no need special care; realizing timing water supply & set temperature water supply according to user demands.

www.versolgroup.com



AS/WH-AIR SOURCE HEAT PUMP WATER HEATER

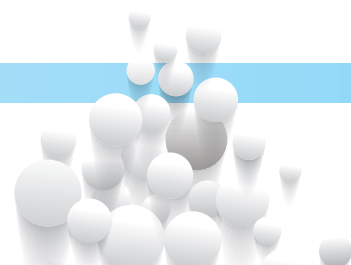


Model	AS/WH-3.5	AS/WH-5	AS/WH-7	AS/WH-9
Power supply	220V/50Hz			
Rated heating output (W)	3500	5000	7000	9000
Rated produce water capacity (L)	75	108	150	193
Rated power (W)	900	1240	1710	2260
Rated current (A)	4.1	5.6	7.8	11.4
Max power (W)	1280	1630	2260	3110
Max current (A)	5.7	7.4	10.4	14.6
Water pump rated power (W)	100	100	130	130
Delivery lift (M)	≤3.5			
Rated outlet hot water temperature (°C)	55			
Max outlet hot water temperature (°C)	60			
Compressor	Fully closed rotor type			
Refrigerant	R410a	R410a	R410a	R410a
Waterproof grade	IPX4			
Electric shock protection type	Grade I			
Noise[DB(A)]	≤53	≤53	≤55	≤55
Net weight (KG)	43	51	61	64
Unit dimensions (MM)	930×360×560	930×360×560	1000×360×630	1000×360×630
Water tank model	PW-150LH	PW-200LH	PW-300LH	PW-500LH
Nominal water tank volume (L)	150L	200L	300L	500L
Water side maximum pressure	0.8MPa			
Water side pressure loss	≤50KPa			
Pipe size	DN15	DN15	DN20	DN20
Numbers of user	3~4 people	4~5 people	6~8 people	10~13 people
Water tank size (MM)	φ 480 × 1460	φ 500 × 1540	φ 570 × 1720	φ 700 × 1940

Note: 1. Testing working condition: use side initial water temperature: 15°C, setting water temperature: 55°C, dry-bulb temperature 20°C, wet bulb temperature 15°C.

2. The above model is our basic type, the final product may have some differences from it.

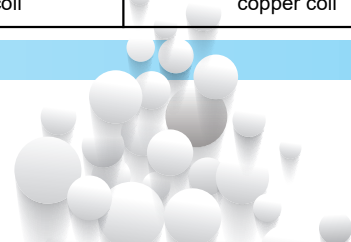
The product parameters may have some differences from the final product because of products updating, please refer to final product label when buy. Our company keeps the right to interpret.



ALL IN ONE AIR SOURCE HEAT PUMP- A01-AS/WH



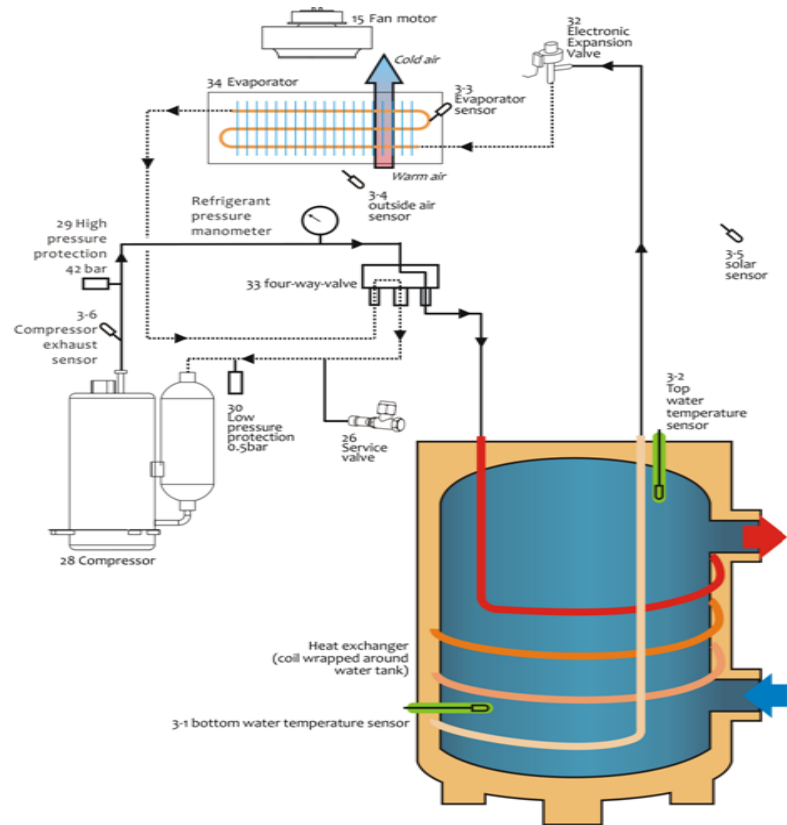
Model		A01-AS/WH-150L	A01-AS/WH-200L	A01-AS/WH-260L	A01-AS/WH-300L
dimension					
Net dimension(D×H)		570x1380	570x1080	φ570 × 1800	700x1712
Packing Dimension (L×W×H)	mm	620x640x1470	620x640x1860	650/650/2000	620x640x1854
Weight net/groos	kg	95 / 105	100 / 115	115 / 125	125 / 135
Noise level	dB(A)	≤45	≤45	≤45	≤45
specification for heating (room temp. 20°C, exhaust air temp. 5°C, water temp. from 15°C to 45°C)					
Rated heating capacity	kW	2.8	2.8	3.1	3.1
C.O.P	W/W	4.2	4.2	4.2	4.2
Rated input power	kW	0.85	0.85	0.9	0.9
Rated input current	A				4.1
refrigerant circuit					
Refrigerant		R410a	R410a	R410a	R410a
compressor quantity		1	1	1	1
compressor type		rotary	rotary	rotary	rotary
type of regulator		electronic expansion valve	electronic expansion valve	electronic expansion valve	electronic expansion valve
maximum operating pressure	bar	43	43	43	43
electrical					
Power supply	V/Hz/Ph	230/50/1	230/50/1	230/50/1	230/50/1
ventilation					
motor type		centrifugal fan	centrifugal fan	centrifugal fan	centrifugal fan
fan speed selection		1 speed	1 speed	1 speed	1 speed
Airflow direction		top discharge	top discharge	top discharge	top discharge
Airflow	m³/h	500	500	500	500
Air pressure	Pa	80	80	80	80
Duct dimension	mm	φ120	φ120	φ120	φ120
hot water connection					
water connection	Inch	3/4 inner thread	3/4 inner thread	3/4 inner thread	3/4 inner thread
hot water setting temperature	°C	25 ~ 55	25 ~ 55	25 ~ 55	25 ~ 55
water tank					
tank volume	liter	150	200	250	300
Tank Body		Galvanized board + painting	Galvanized board + painting	Galvanized board + painting	Galvanized board + painting
inner tank material		Duplex Stainless Steel	Duplex Stainless Steel	Duplex Stainless Steel	Duplex Stainless Steel
water exchanger coil		copper coil	copper coil	copper coil	copper coil



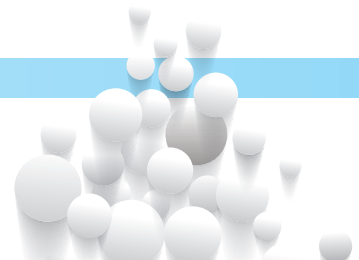
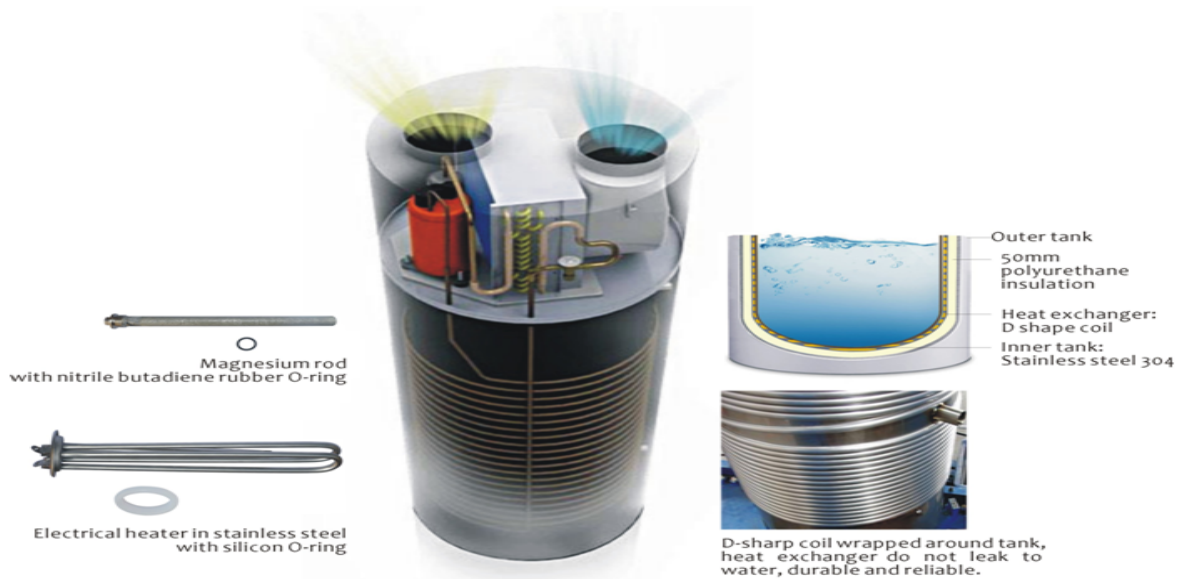
topical installation plan



refrigerant circuit



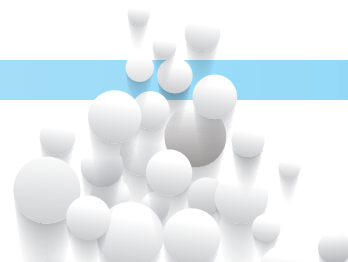
water path



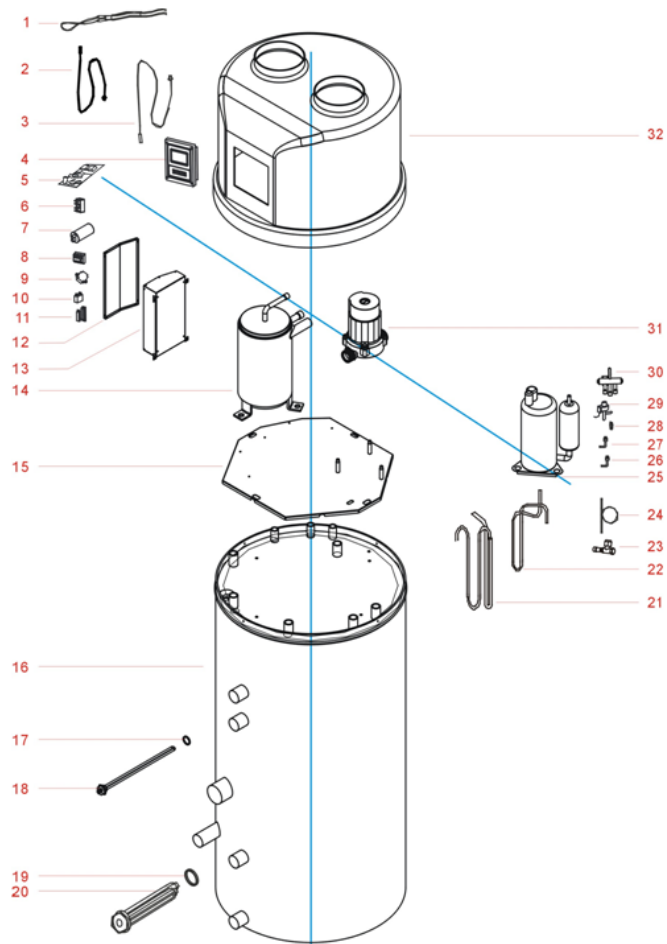
ALL IN ONE WATER SOURCE HEAT PUMP- A01-WS/WH



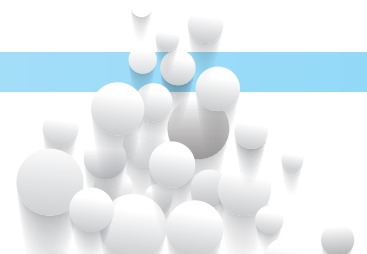
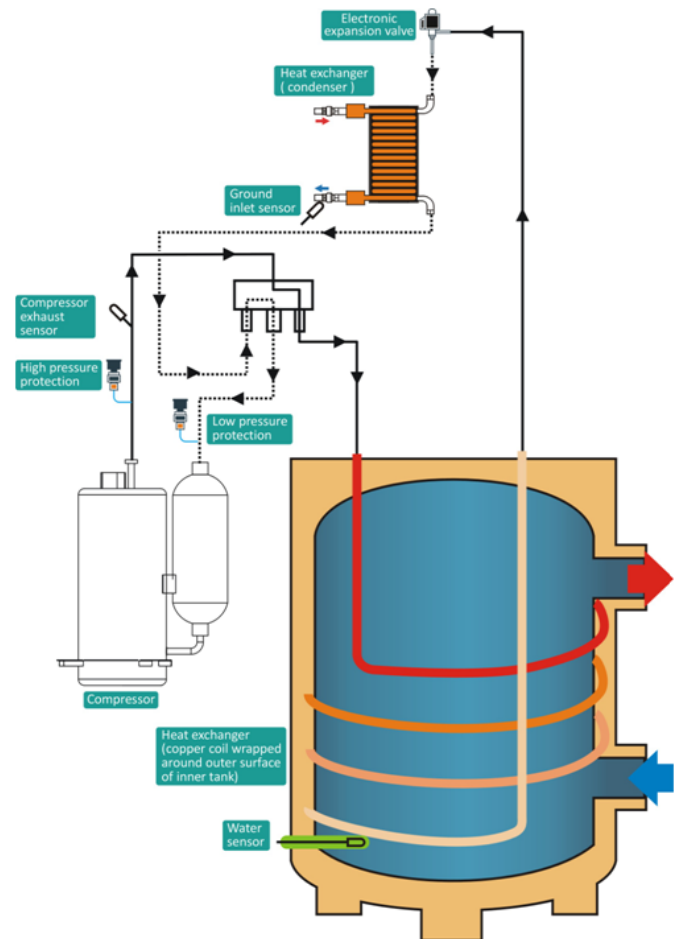
Model		A01-WS/WH-200	A01-WS/WH-250	A01-WS/WH-300
dimension				
Net dimension(D×H)		φ570 × 1650	φ570 × 1800	φ640 × 1800
Packing Dimension (L×W×H)	mm	650/650/1800	650/650/2000	780/780/2000
Weight net/groos	kg	100 / 110	115 / 125	130/140
installation place		inside house		
Noise level	dB(A)	≤50		
Tank Body		Galvanized board + painting		
spefication for heating (water source 15'c, water temp. from 15'C to 50'C)				
Rated heating capacity	kW	2.53		
C.O.P	W/W	5.5		
Rated input power	kW	0.46		
Rated input current	A	2.1		
electrical				
Power supply	V/Hz/Ph	230/50/1		
refrigerant circuit				
Refrigerant		R134a		
compressor quantity		1		
compressor type		rotary		
compressor brand		HIGHLY (shanghai HITACHI)		
compressor model		WHP01900BSV		
type of regulator		electronic expansion valve		
maximum operating pressure	bar	24		
water source				
ground pump		bulti-in, class A water pump		
water heat exchanger (evaporator)		shell tube		
rated water-flow-volume	l/s	0.2		
water connection	inch	G3/4" inner thread		
hot water				
water connection	inch	G3/4" inner thread		
electrical heater backup	kW	1.5		
heat exchanger coil (condenser)		copper coil wrapped round outer surface of inner tank		
water tank volume	liter	200	250	300
material for inner tank		Duplex Stainless Steel		



explored view



refrigerant circuit





"Water Heating & Cooling Solutions"

Solar Water Heaters

Heat Pumps

Storage Calorifiers

Heat Exchangers

Hot Water Boilers

Gas Fired Calorifiers

Electric Calorifiers

Steam Boilers



www.versolgroup.com